

Empowering Children



For Life

An injury to the brain before or shortly after birth may impact a child's development and movement. Your participation would help us improve treatment and therapy options for babies in the future!

We recognize each participant and family involved in our laboratory as a valuable contributor to our research and as an equal member of our team. We respect the unique ways each individual, whether a child or an adult, can strengthen our research laboratory community and enrich our understanding of early brain injury and resultant abilities. We are committed to honoring all members of our research community as together we strive to 'Empower Children for Life'

Meet our Directors



Bernadette Gillick, PhD, MSPT, PT
Principal Investigator,
Associate Professor,
Department of Pediatrics



Ryan McAdams, MD
Medical Director,
Department of Pediatrics

Contact Us:

We invite you to contact us to learn more about this study. There is no obligation to participate.

1500 Highland Avenue, Madison, WI 53705
608-381-2699

Email: brainrecovery@pediatrics.wisc.edu
Website: pnl.waisman.wisc.edu

This research is supported by:



National Institutes
of Health



Department of Pediatrics



Waisman Center

University of
Wisconsin-Madison



Pediatric
Neuromodulation Laboratory

Baby Brain Recovery Study

Help us learn more about how an infant's
brain develops
after early brain injury

Q&A

What is this study about?

We are exploring how changes in the brain after an early brain injury impact motor development. Our goal is to promote early diagnosis and improve treatment options for infants with brain injuries.

What is the time commitment?

Each timepoint will consist of two sessions, each of which will be about 3-4 hours.

We offer two enrollment options:

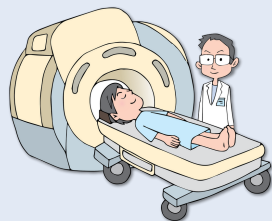
1. **Two-Year Option:** Participation occurs over the first two years of your child's life at 4-5 specific growth timepoints.
2. **One-Visit Option:** Participation occurs for one timepoint when your child is 3-6 months of age.

Is there support for involvement?

Support for travel is available for all participants. For the Two-Year Option, we will pay you up to \$450 for participation. For the One-Visit Option, we will pay you \$100 for participation.

How will my baby's safety be addressed?

We have thorough safety protocols in place to help us do everything we can to keep your baby safe and comfortable. Parents/legal guardians will accompany their child throughout the study.



IMAGING

While your child is naturally sleeping, we will take a picture of their brain. The MRI scan will help us better understand brain development.

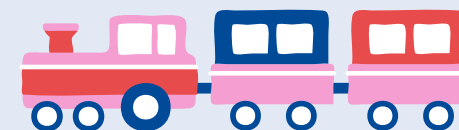
CONNECTIVITY

We assess your child's brain connectivity with brief and painless pulses applied from a device that rests gently on your child's head.



MOVEMENT

We see how your child is moving and developing with infant play-inspired assessments.



Who can Participate?

Babies who are 0-6 months old with a history of early brain injury, accompanied by a parent/legal guardian.

*Please contact our team to help determine eligibility and learn more about our study.

STUDY LOCATION

The Waisman Center is where all study visits will take place. It is located on the west end of the University of Wisconsin-Madison campus.
(1500 Highland Ave., Madison, WI, 53705)
There is free accessible parking available.

We offer weekday, evening, and weekend study visits to accommodate family schedules. Support for travel is available for participants.



UWHealthKids